



# Into The Light

## 20 Years and counting

**Welcome to the latest edition of Into the Light.**

**Firstly, I would like to say a massive thankyou to all of you that have supported our work financially, prayerfully and practically over the last twenty years!**

Yes, twenty years! I'm not sure where the time has gone but so much has been achieved by God through Cry in the Dark and our charitable organisation Asociatia Lumina, that works on the ground on a daily basis at our main projects Casa Lumina Hospice Lumina and Hospice Casa Albert.

As we move forward into another exciting year that will be full of challenges, we already have plans to convert Hospice Casa Albert to an Education and training/ Volunteer centre. Hospice Casa Albert will now be known as 'The Casa Albert Education and Training Centre'.

It will provide two days a week respite care for our Hospice patients and will be used for our new partnership with St Christopher's Hospice South London as part of the QELCA (Quality in end of life care) training programme for which we have been selected as a satellite training centre for Romania. Exciting times!

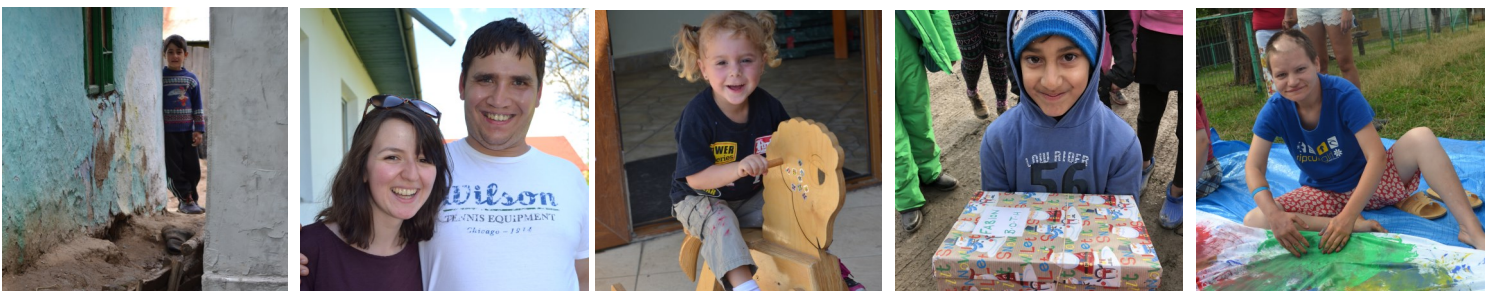
We will of course be continuing with our Schools Volunteer Programme and our very popular Micro Gap and Summer Volunteer Programme.

Later this year, as part of our palliative care work, we hope to be able to renovate Casa Lumina and accommodate within in it a small assessment clinic for children and young people who are living with life limiting and terminal illness within Comanesti and the surrounding area.

So, there is a lot going on this year and we hang on to the coat tails of God as he takes us further with him on his journey to reach the poor sick and marginalised.

*With blessings and thanks  
Steve*

*CEO/Founder Cry in the Dark U.K.  
President/Founder Asociatia Lumina Romania*





*In the summer of 2017, Neil joined the team who cycled across Romania to raise money for CitD*

## A thank you from the Chairman

At our recent Annual General Meeting we were reflecting on this being our 20th year as a charity. It is an incredible achievement and one that we plan to reflect on further as we approach our anniversary later this year.

At every AGM it's always really inspiring to hear Beth's update on the activities, fundraising activities and volunteer teams that have taken place throughout the year. You will be familiar with our vision, to put Christian love and compassion into action by reaching out to children and young people of any race, creed or faith who are marginalised by poverty, sickness or disability. Along with the incredible hard work of Steve, Beth and all the staff in the projects in Romania, the vision of Cry in the Dark depends so much on our incredible supporters, volunteers and Cry Partners.

Whether you're a prayerful supporter, fundraiser, mission trip volunteer, micro-gapper, shoe box donor, Cry Partner, or all of the above, I wanted to say on behalf of the Board, THANK YOU! We simply can't do what we do without your support. Your compassion and your action will continue to make a huge difference to the work that we do and we look forward to seeing what God has in store for this year.

With Blessings  
Neil Curtis  
Chairman

### **The biggest thank you ...**

Our Christmas shoebox appeal to Romania continues to get bigger and bigger each year and winter 2017 was no exception.

This year, thanks to 100s of people, loads of churches and some brilliant schools, we managed to gather just over 1500 shoeboxes for the children and young people we work with in Romania.

It's mind blowing to us here at Cry in the Dark that so many people from all over the UK work so hard to make sure that each and every child and young person we work with in Romania receives a present at Christmas time.

We had an amazing group of volunteers who got the sought after job of handing out the Christmas shoeboxes in Romania in 2017. They visited children in their homes, in their schools, in their villages and also got to be part of Father Christmas's visit to Casa Lumina.

The theme however in each of these different places is the joy that this box of gifts can bring to a child! It really is

a Christmas miracle for a lot of the children who receive a gift.

We are already full for volunteer spaces on the 2018 trip, but it isn't too late to get involved!

If you think you would like to make shoeboxes this year, pop us in your diary to get in touch around August/September time. We would love to have you on board.

If you want to see photos and videos of the shoeboxes being handed out search "Cry in the Dark" on Facebook and you will find loads.



### A new minibus

We're looking for help!

We are in desperate need of an updated Minibus at Hospice Casa Albert.

We were so blessed to receive a grant years ago that enabled us to purchase our brilliant white bus for Hospice Casa Albert, but after 1000s of journeys taking patients and volunteers all over Romania the bus is a little worse for wear to say the least.

To enable us to continue to safely move our amazing patients and volunteers around we need to fund the purchase of a new second hand bus.

We have set up a giving campaign where you can donate, begin a fundraiser for the cause and share the need.

Please click the link to get involved and help us put a safer, more reliable bus on the road in Romania.

<https://www.justgiving.com/campaigns/charity/cryinthedark/minibus>

# California Dreaming 2019

## SAVE THE DATE!

**We are thrilled to announce that this amazing fundraiser will be back in September 2019! You will cycle from San Francisco to San Diego along the most beautiful coastal roads with an awesome team of people.**

**You will cycle 640 miles over 7 days. It will challenge you but you'll have the best experience.**

**It will be a completely supported ride, so you don't need to worry about anything but pushing your pedals and raising the money.**

**If you're interested in taking part please register your interest and get further information by emailing [steve@cryinthedark.org](mailto:steve@cryinthedark.org)**



## A Quizzing good time....

We recently held a fundraising quiz in Colchester and were really grateful for the support and love people showed us.

We now have a fully written quiz (8 rounds plus 2 bonus rounds) and we'd be more than happy for you to run your own CitD quiz in your area.

It takes a little advertising and a venue but apart from that it is incredibly simple to hold a quiz.

If you think you can get involved in running this kind of fundraiser for CitD please get in touch for the quiz pack.

Email—  
[bethjohnson@cryinthedark.org](mailto:bethjohnson@cryinthedark.org)

## Hospice Lumina – “A place to breathe”

Hospice Lumina opened its door to its first patients in September 2017 and we praise God for the difference it has made in such a short amount of time to the families and patients we work with in North East Romania.

Currently Hospice Lumina is offering one or two week respite care slots for children and in some cases their parents. They receive 24/7 medical care and attention as well as a full programme of activities in the day time for those who can part take.

We have a chef who makes really great nutritionally balanced meals for all those children and young people who can eat orally and their parents of course. As well as a full medical, social and care team.

On a visit just after the opening in October Steve Cooper (CEO) was introduced to the mother of one of the children receiving 2 weeks respite. Her daughter has incredibly complex medical issues and requires complete care for all of her needs. As it was her first stay, the patient's mother was invited to stay with her during her respite.

Steve asked the patient's mother what she thought about Hospice Lumina and she replied "It is a gift from God" for those two weeks she was staying at hospice lumina she told us she had "Found a place to breath".

For mothers like this one, who live stuck in their homes 24 hours of each day with very little social interaction and very little help, the hospice is a complete life saver. For her, having the time for a break and having nurses and doctors on hand to take care of her daughters medical needs gave her the boost to go back into her "real world" a little more relaxed and rejuvenated! She cannot wait for her daughter to return for her next bout of respite.

Hospice Lumina also offers end of life care to families who feel this will be a better environment than their family home for their child to end their life.

We are so grateful for your support as we continue to pioneer new ideas and ideals in Romania.



# £2 PARTNERS

Calling all supporters - we need you!

CAN YOU GIVE JUST £2 A MONTH?

## £2 Partner Appeal

At the end of 2016 we launched our £2 Partner appeal and we have been so grateful for the success of it.

CitD runs on the generosity of amazing people like you and we have been blessed with long standing faithful supporters, at this time though we are desperate for more people to sign up to give regularly and we are asking you to do that from as little as £2 a month.

£2 a month can go a long way in Romania.

With just £2 you can buy -

- ◆ 10 loaves of bread
- ◆ The petrol to get a nurse to a patients house
- ◆ 32 litres of clean drinking water
- ◆ A days worth of incontinence pads for a family
- ◆ A 2 course hot meal at Casa Lumina

As you see, we can make a huge difference with just a small regular gift.

You can sign up to be a £2 Partner with your bank via Standing Order. All the details are on the form to the right →

Or you can visit our Virgin Money Giving page and sign up there:

<http://uk.virginmoneygiving.com/charity-web/charity/finalCharityHomepage.action?charityId=1002735>

Thank you

## £2 Partner Appeal

I would like to become a **£2 Partner** and help Cry in the Dark continue to serve some of the neediest children and young people in North East Romania from as little as £2 a month!

I would like to make a monthly gift of **£2**  **£5**  **£10**  Please tick chosen amount or

Other amount **£** \_\_\_\_\_ (Please state)

### STANDING ORDER INSTRUCTIONS TO YOUR BANK:

Please pay the sum indicated to: CRY IN THE DARK, ROYAL BANK OF SCOTLAND Plc  
59 STREATHAM HIGH ROAD  
LONDON SW16.  
Sort Code: 160093  
ACCOUNT No:10025884

Starting (date):...../...../..... and thereafter until further notice.

Signature: \_\_\_\_\_

Date: \_\_\_\_\_

### Please debit my/our account as indicated above:

Account name:.....

Sort Code:..... Account No:.....

I have set up the standing order directly with my bank – Yes..... No.....

### Name and address of Bank/Building Society:

Postcode: _____

### Gift Aid: if you are a U.K. tax payer, your gift could be worth an extra 25%.

**Gift Aid:** I confirm that I am a U.K. tax payer and wish Cry in the Dark to treat all donations I make from now on as Gift Aid donations. I pay income tax and/or capital gains tax at least equal to the amount Cry in the Dark reclaims on my donations:

Signature: \_\_\_\_\_

Date: \_\_\_\_\_

### My name & contact details: (Please print clearly)

Email: \_\_\_\_\_

Home Address: \_\_\_\_\_

Postcode: \_\_\_\_\_

Phone No: \_\_\_\_\_

## Cry in the Dark

8 Trowel Place, Colchester, Essex, CO2 9FZ E-mail: [bethjohnson@cryinthedark.org](mailto:bethjohnson@cryinthedark.org)

[www.cryinthedark.org](http://www.cryinthedark.org)  
Registered charity 1071517